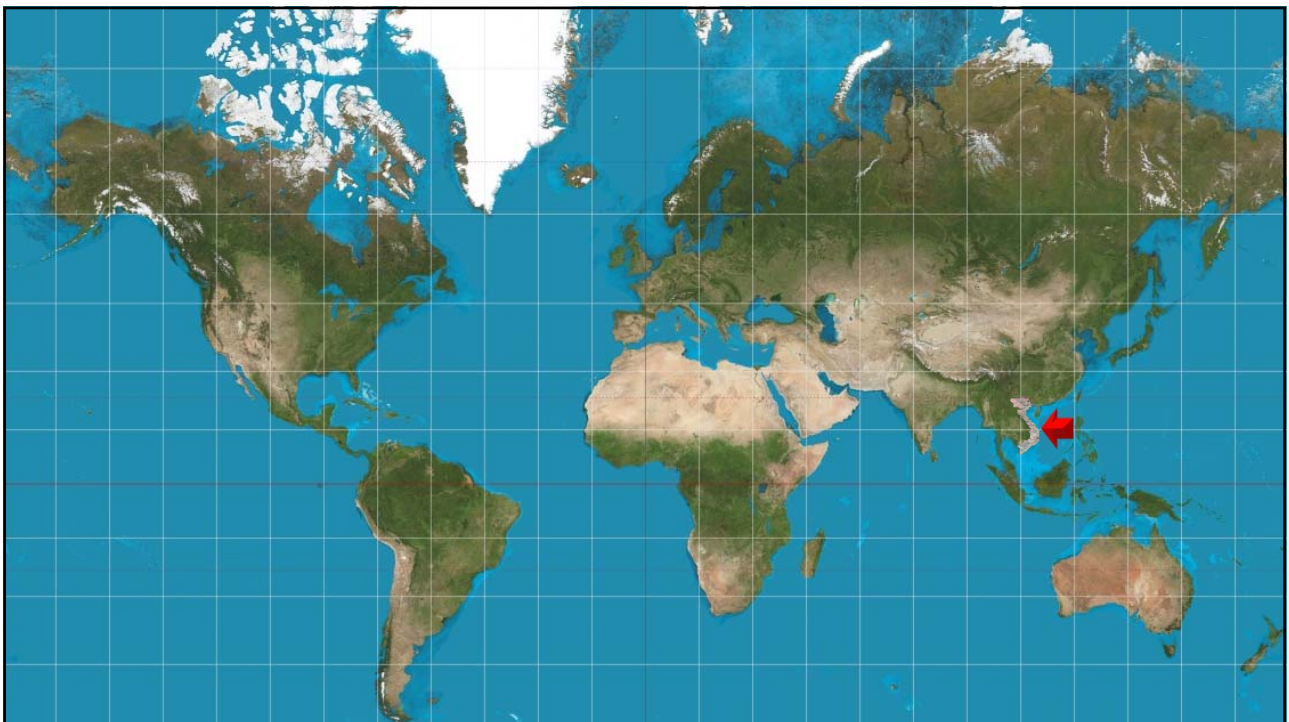
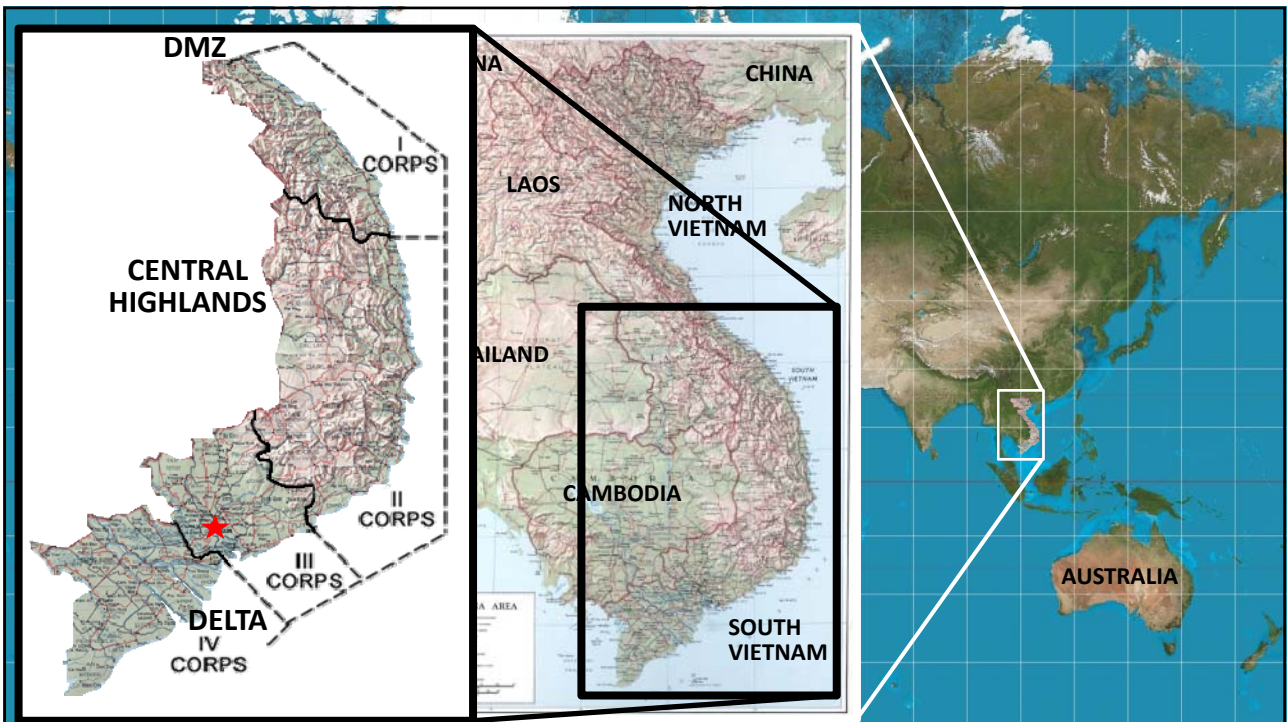
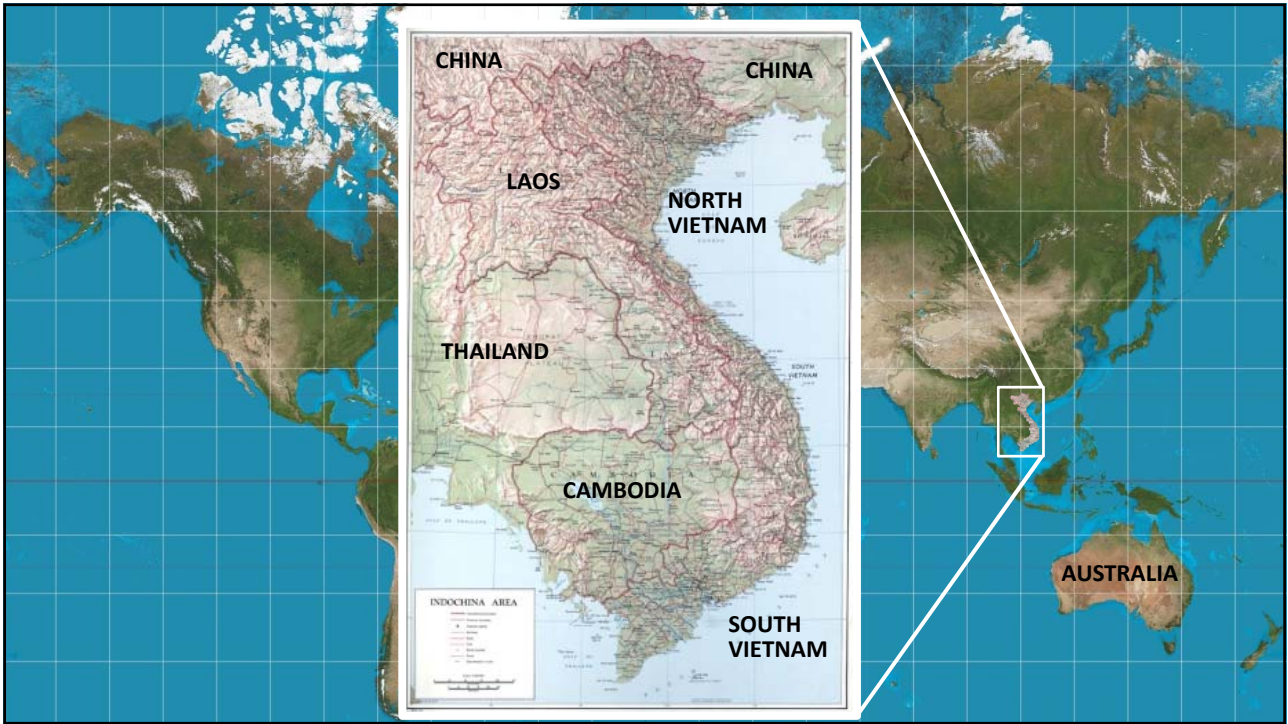
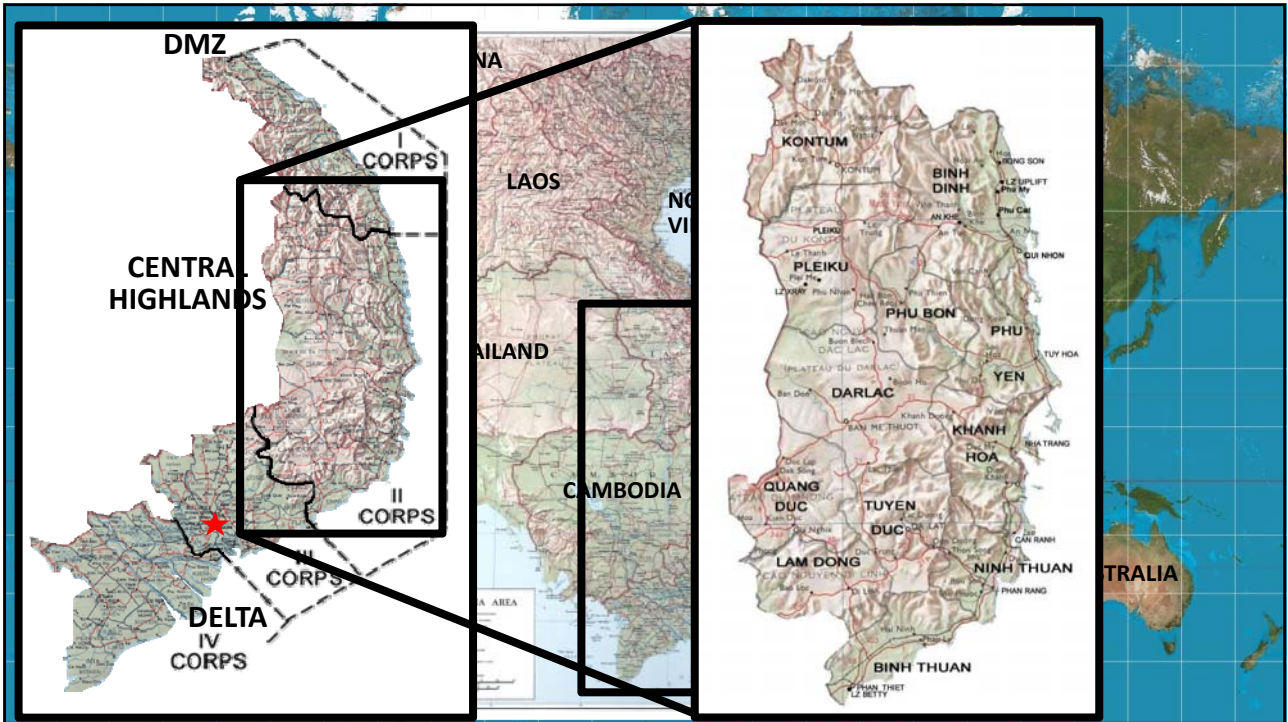




MILITARY
HISTORY
VIETNAM
1969-1970

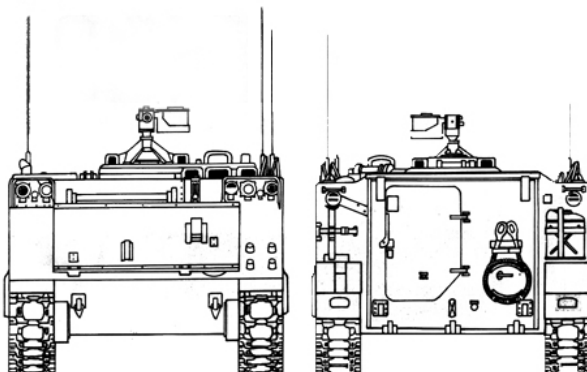
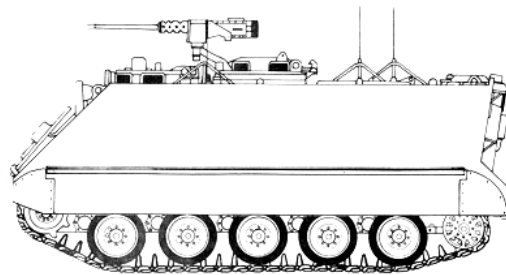
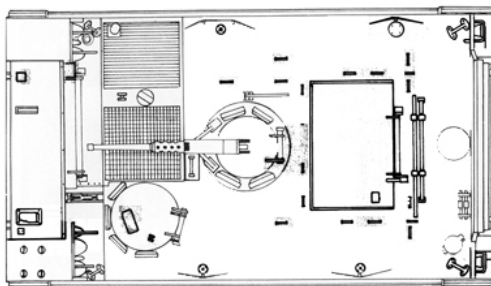
The title graphic features a camouflage pattern background. The word "MILITARY" is rendered in a light green, blocky font with a dark outline, positioned above a horizontal line. Below the line, the word "HISTORY" is in a larger, bold, black font with a white outline. At the bottom, "VIETNAM" and "1969-1970" are written in a white, serif font with a dark outline.





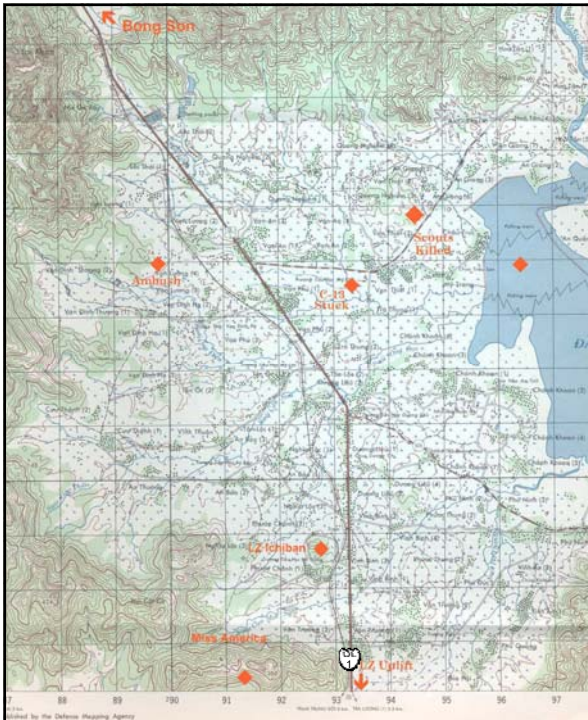


M113 A1



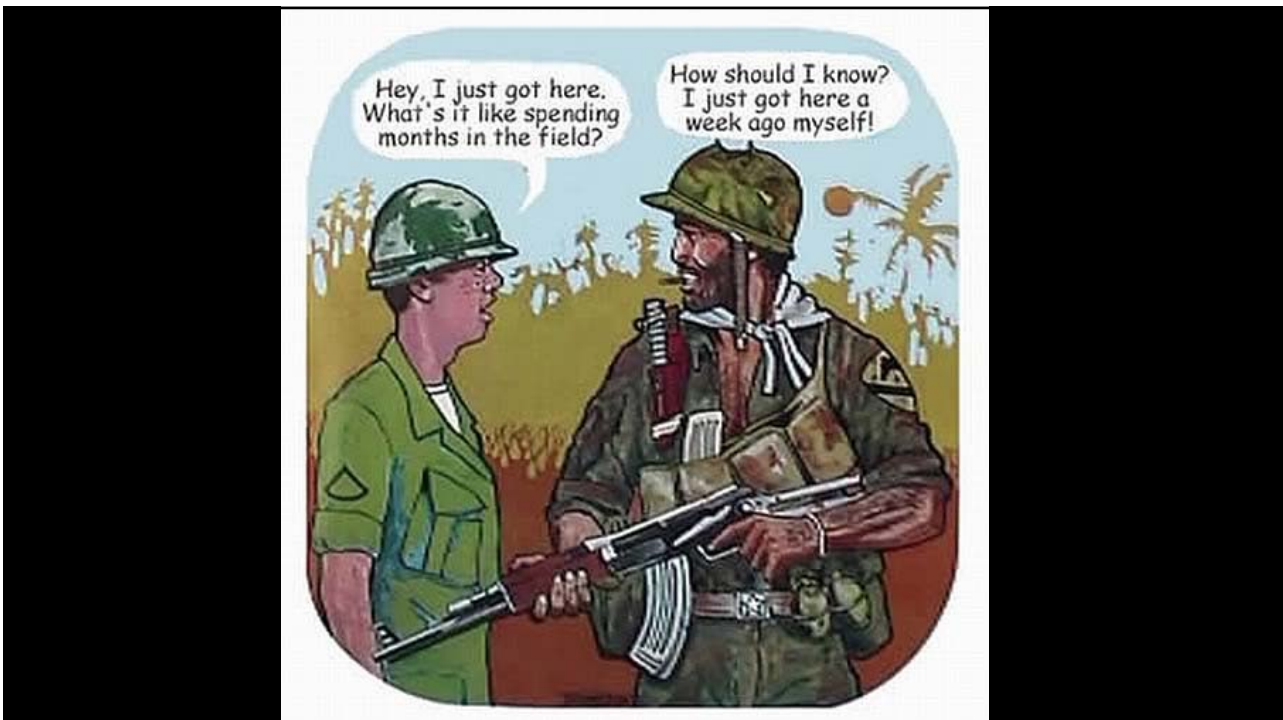
Specifications

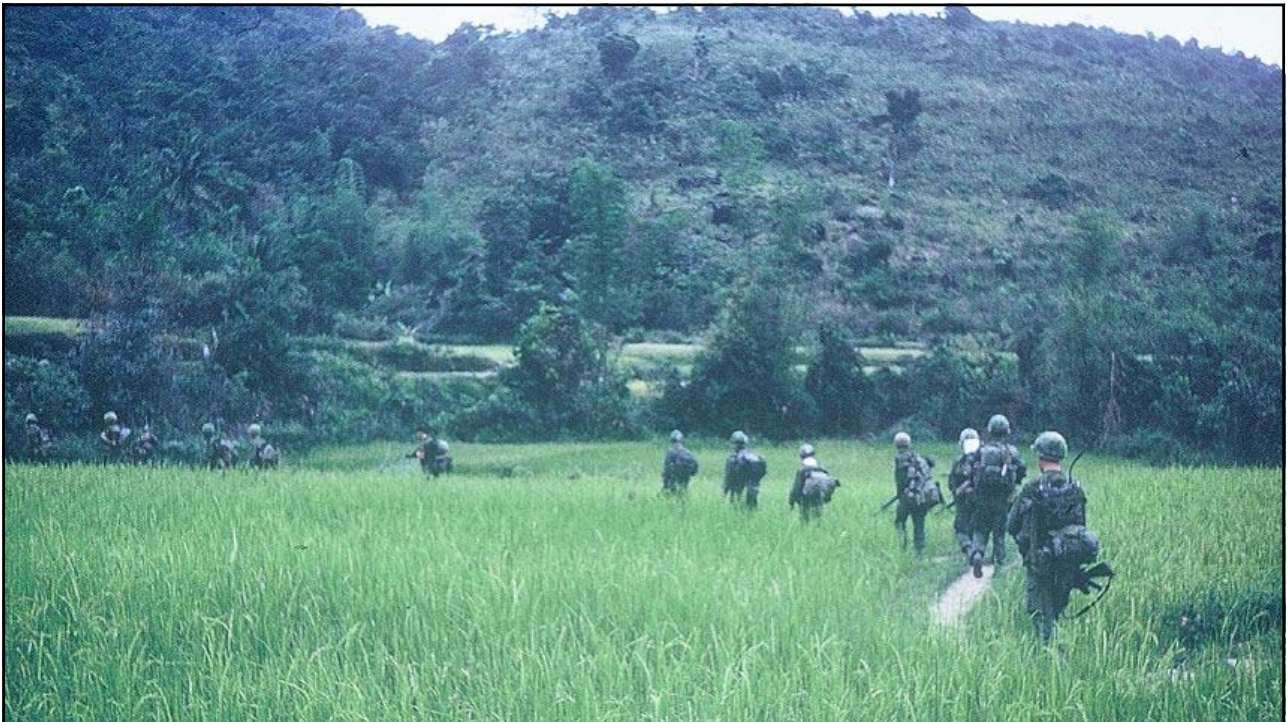
HEIGHT	8 ft. 2½ in.
WIDTH	8 ft. 9¼ in.
LENGTH	15 ft. 11½ in.
CREW	1
Troops	12
WEIGHT		
Combat - Loaded	24,594 lb. (11,156 kg)
Net	21,383 lb. (9,702 kg)
Air-Drop	19,373 lb. (8,788 kg)
GROUND PRESSURE		
Combat Weight	7.81 psi (0.549 kg/cm ²)
ARMAMENT	Cal. 50 Machine Gun
AMMUNITION	2000 rds Cal. 50
CAPACITY	95 gal. (360 l)
SPEED, Land Level Road	42 mph (67.59 km/h)
Water	3.6 mph (5.8 km/h)
GRADEABILITY		
Forward slope	60%
Side slope	30%
VERTICAL-OBSTACLE	2 ft. (0.61 m)
TRENCH-CROSSING	5½ ft. (1.68 m)
TURNING CIRCLE	28 ft. (8.53 m)
CRUISING RANGE	300 mi. (483 km)



Minimum Force Necessary

- The Vietnam Rules of Engagement (ROE) for occupied areas allowed appropriate action to defend oneself and one's unit against hostile acts:-
 - Hostile fire may be returned promptly and effectively when the enemy is positively identified and in close contact.
 - Flat-trajectory weapons (rifles, machine guns, grenades and recoilless rifles) may be used in civilian-populated areas, only if there was a specific, identifiable target.
 - Unit calls for mortar, artillery or aerial support will be submitted through the province chief, district chief, sector commander and a battalion or higher command.













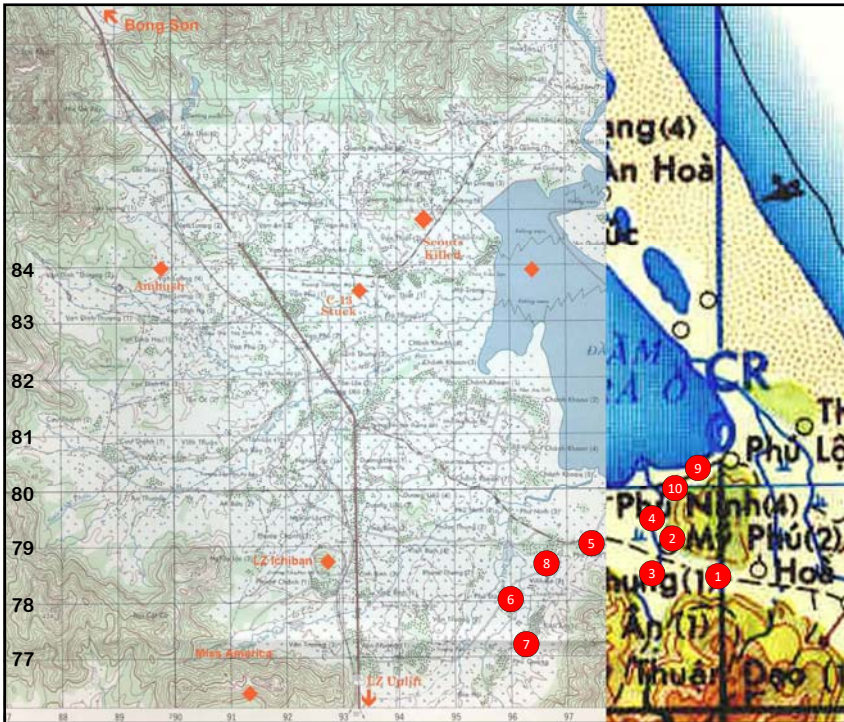












My 1st 3 Days in Combat

24 May

1. 1330 Join A/1-50 as XO(A)
2. 2115 1/A ambush makes contact

25 May

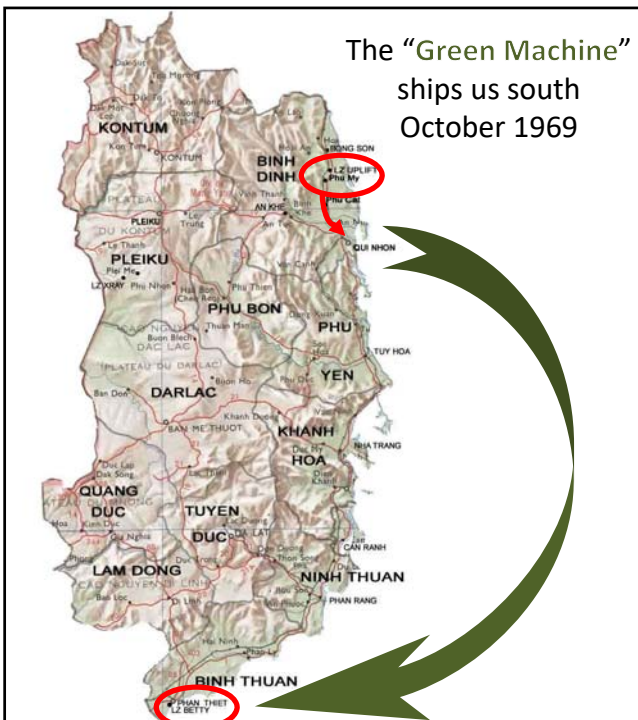
3. 0240 Small arms fire from two sides; satchel charge (dud); 4 RPGs; rtn fire.
4. 0700 1/A spot 4 VC; 3 EN KIA
5. 1050 1/A finds 3x 105mm rd.
6. 2340 Receive mortar fire

26 May

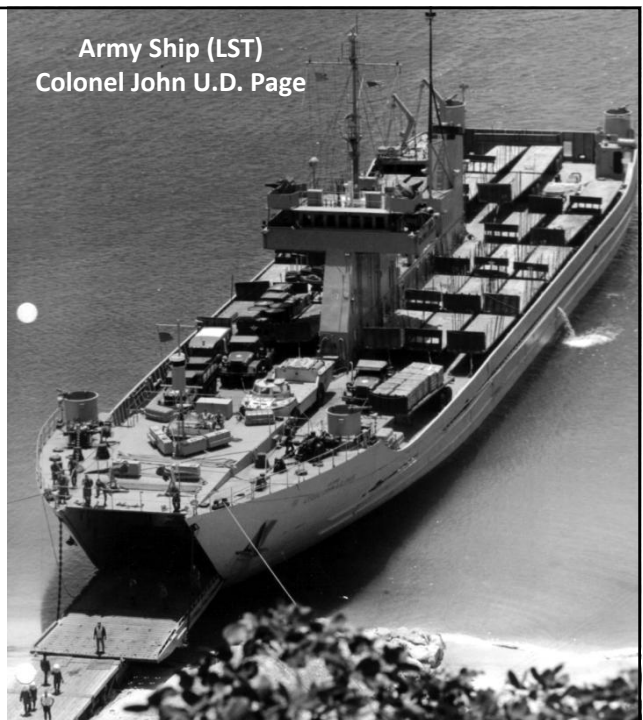
7. 0940 1/A finds bunker complex
8. 1550 1/A mortar track hits mine 6 US WIA (2 critical – 1 dies)
9. 2035 Ambush with ARVN makes contact. 1 ARVN KIA; 1 VC KIA

27 May

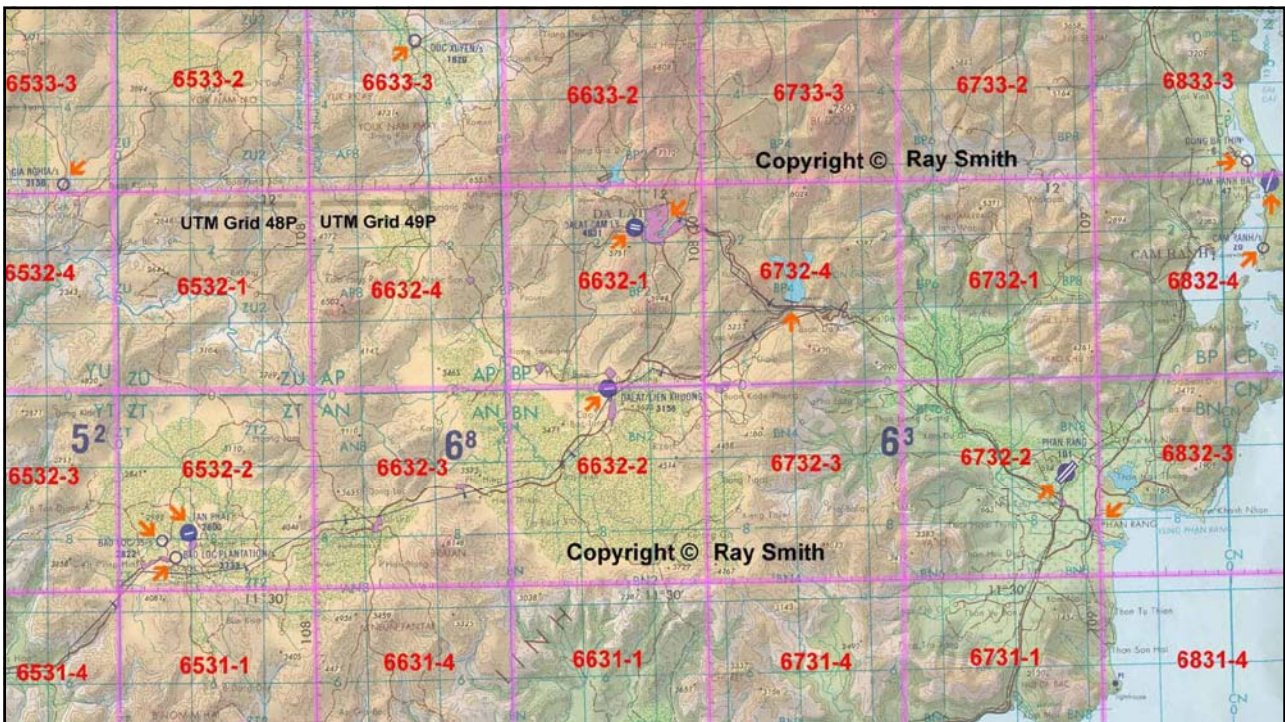
10. 1005 1/A cmd det Claymore; US 2 KHA, 3 WIA (1 later dies)
11. 1130 2/A finds 6 booby traps
12. 1315 XO(A) returns to LZ Uplift
13. 1500 Assume command of Co D, 1-50.



The "Green Machine" ships us south October 1969



Army Ship (LST)
Colonel John U.D. Page

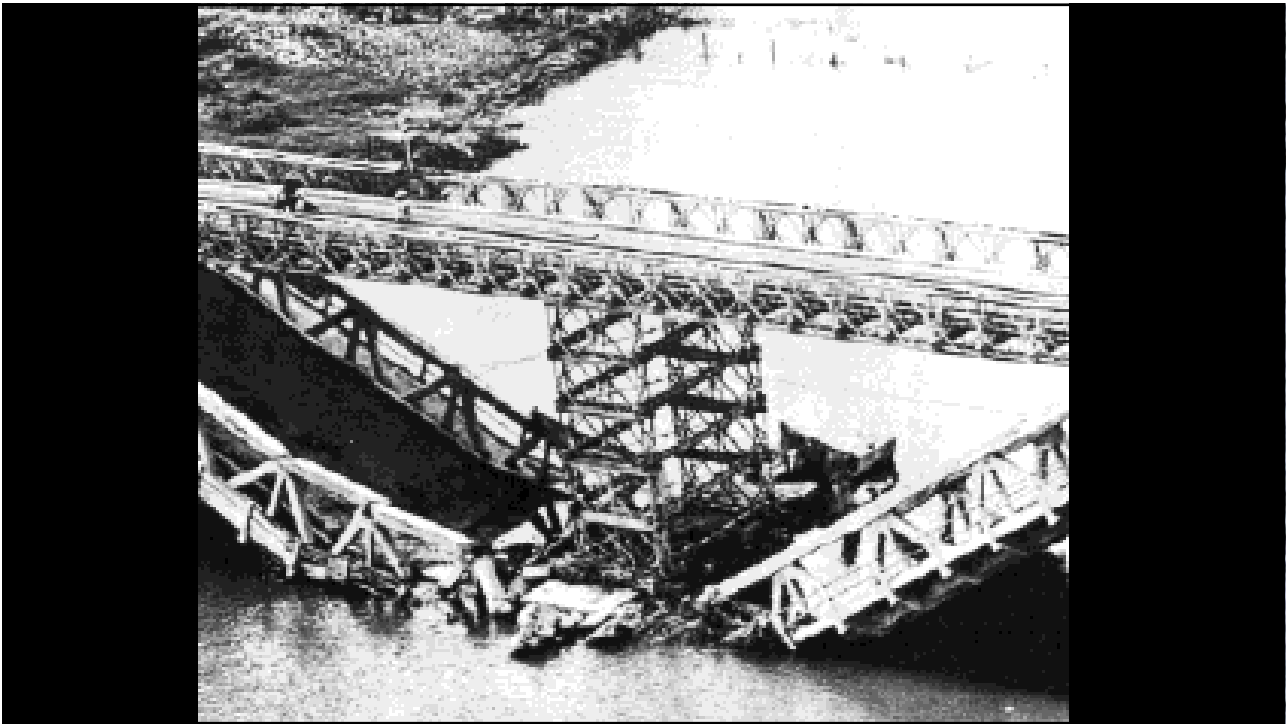






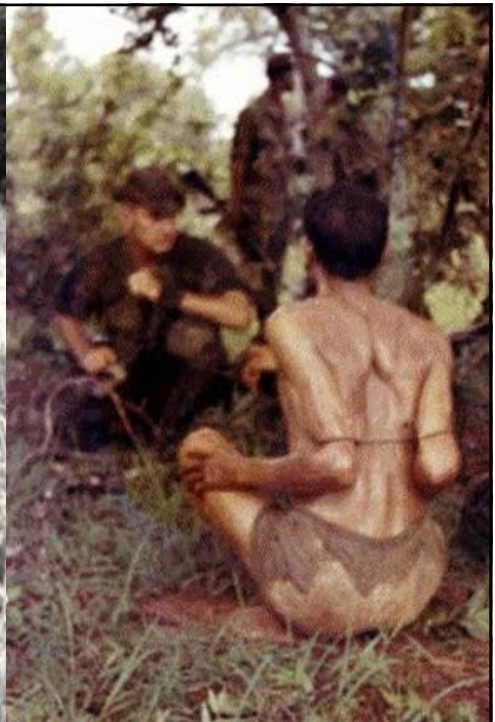






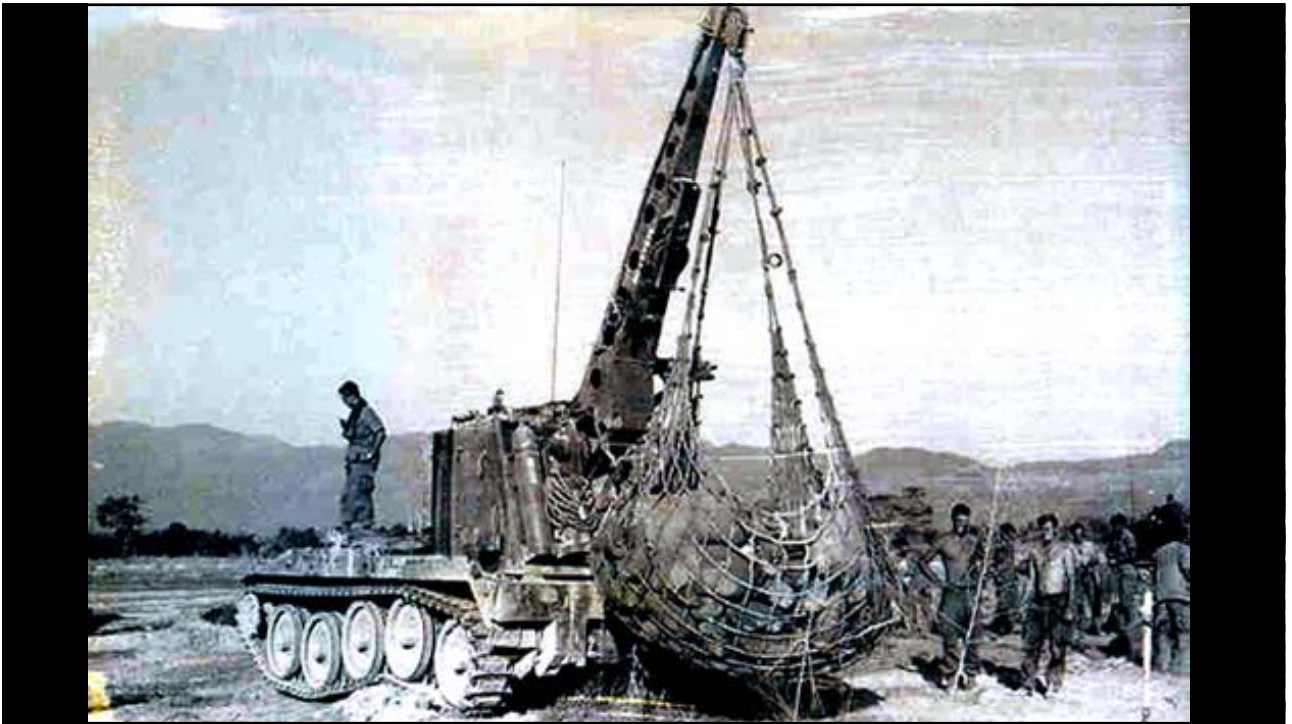




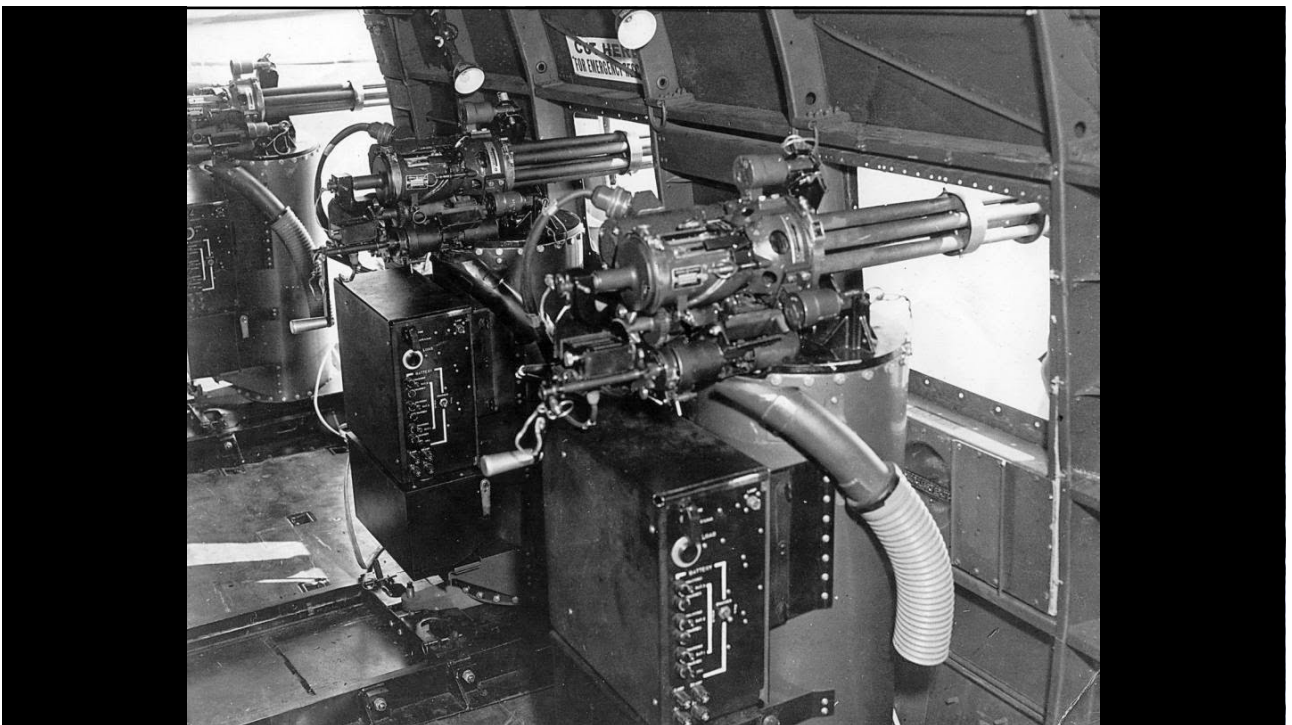






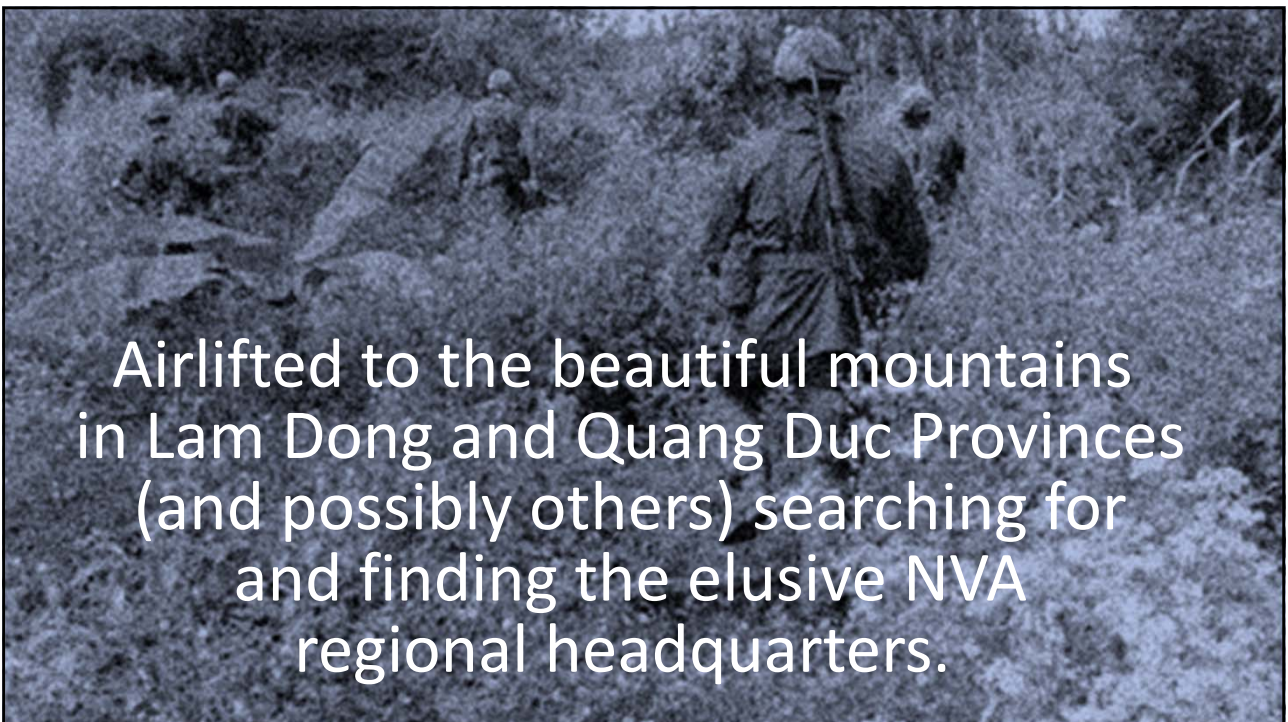


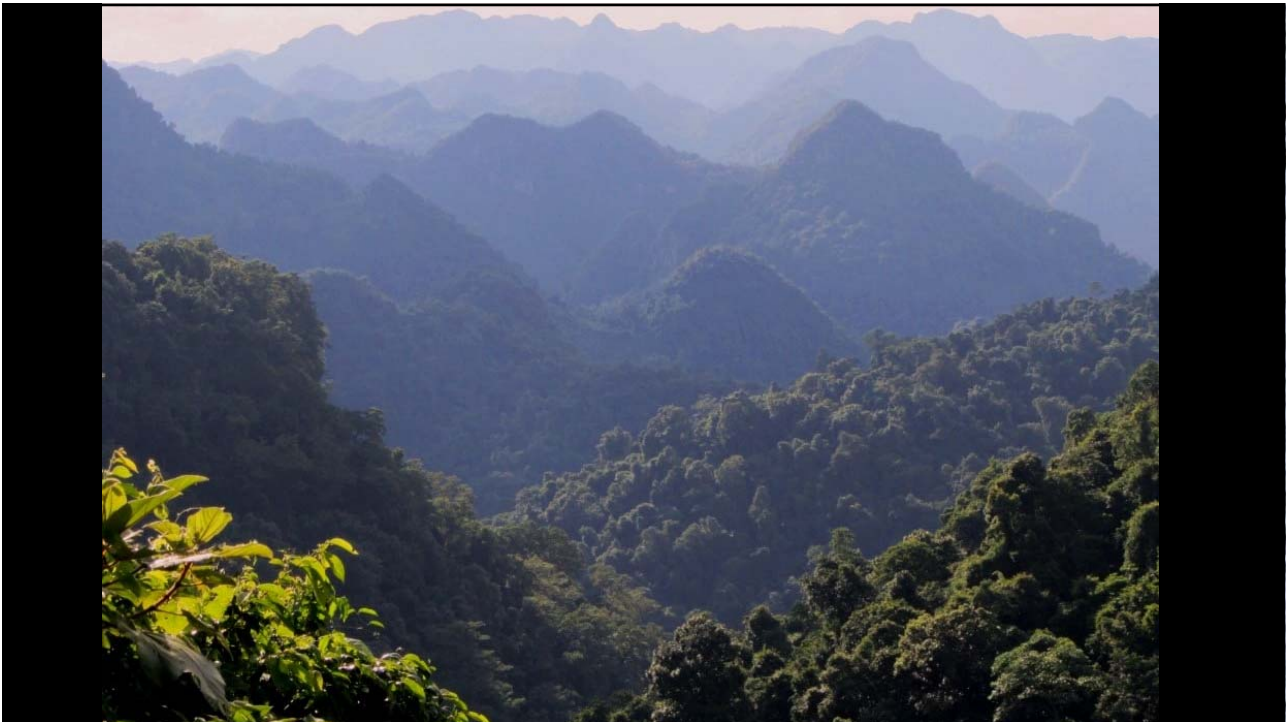
















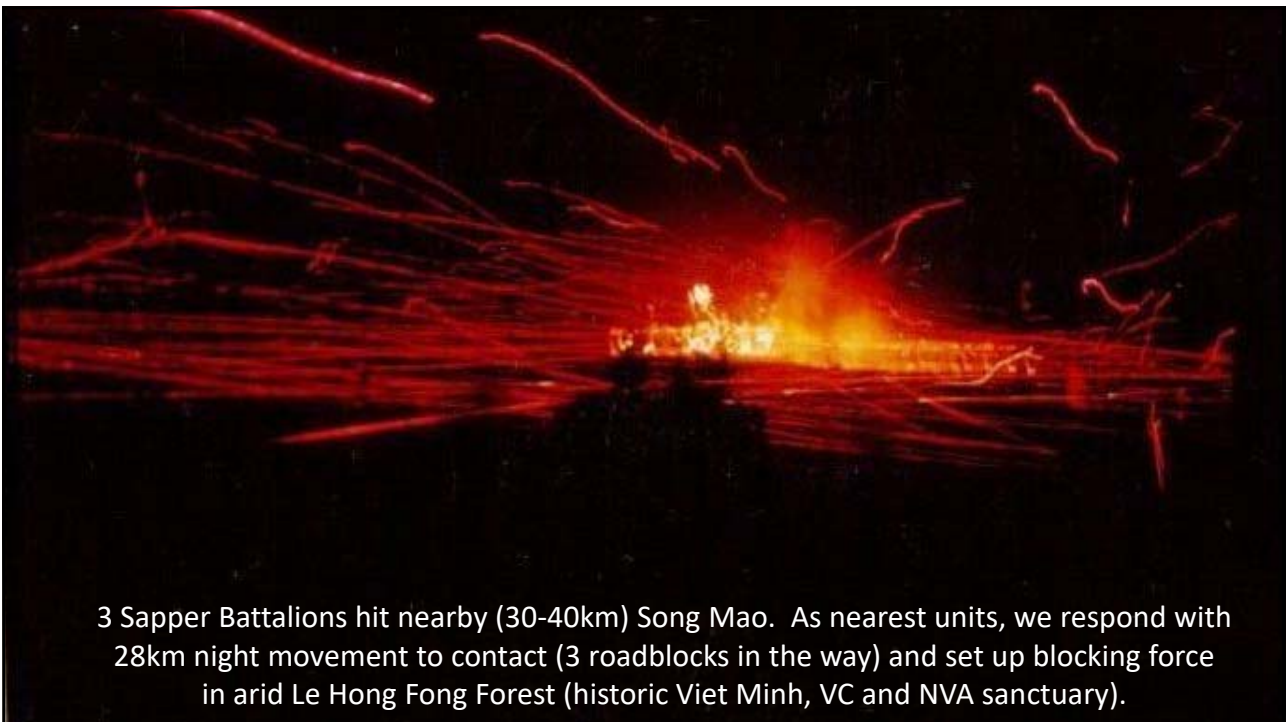










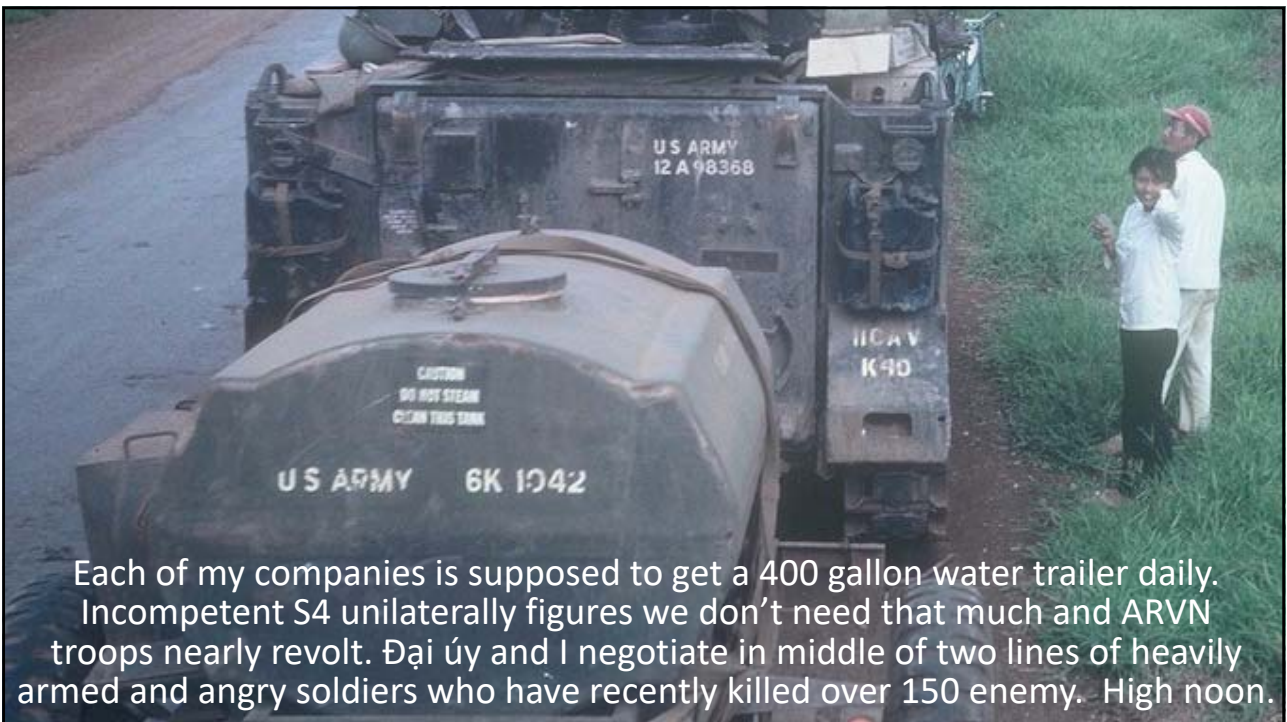


3 Sapper Battalions hit nearby (30-40km) Song Mao. As nearest units, we respond with 28km night movement to contact (3 roadblocks in the way) and set up blocking force in arid Le Hong Fong Forest (historic Viet Minh, VC and NVA sanctuary).

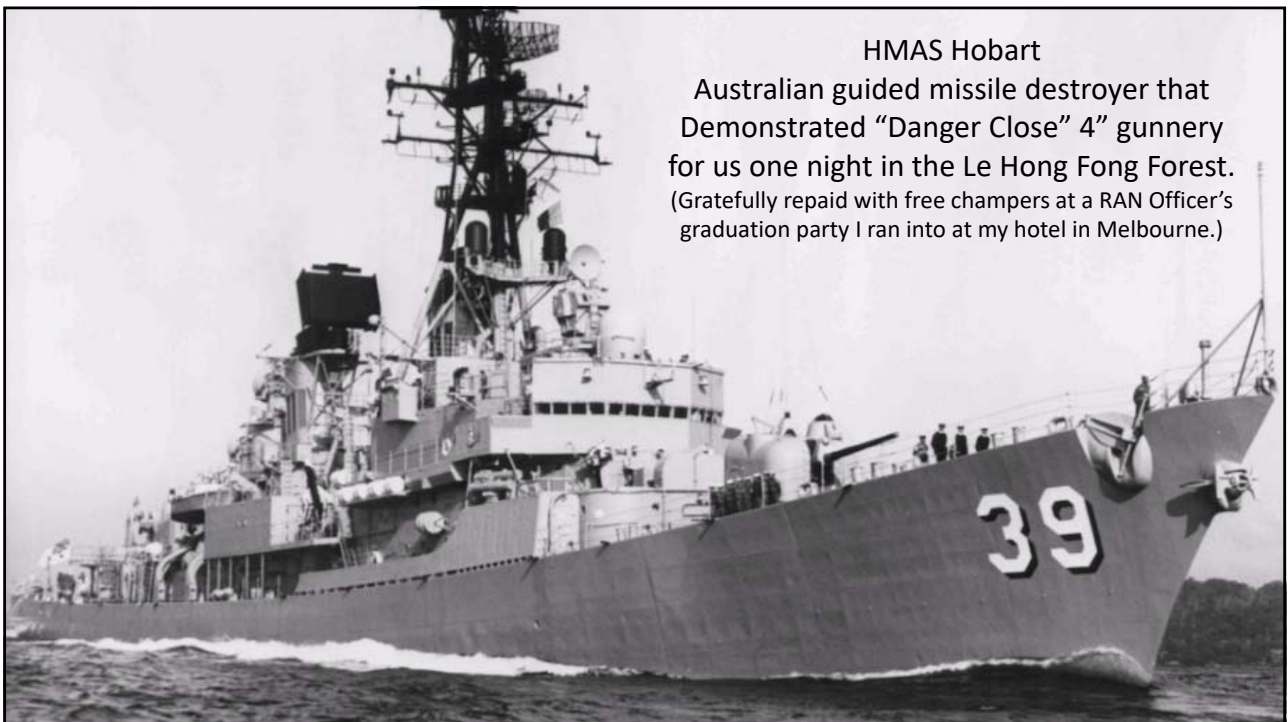




Forest has had 100m wide swaths cleared by Rome Plows to enable access.



Each of my companies is supposed to get a 400 gallon water trailer daily. Incompetent S4 unilaterally figures we don't need that much and ARVN troops nearly revolt. Đại úy and I negotiate in middle of two lines of heavily armed and angry soldiers who have recently killed over 150 enemy. High noon.









The night before I DEROS, 3 (different) Sapper Battalions hit LZ Betty to destroy choppers on pads (6 destroyed). Seven men penetrate Green Line (taking out two bunkers) and ambush reaction force (6 US KIA). After a couple of hours acting as a grunt, I am asked to ID bodies.





